

### IMMOBILE COMMERCIALE A RENDITA

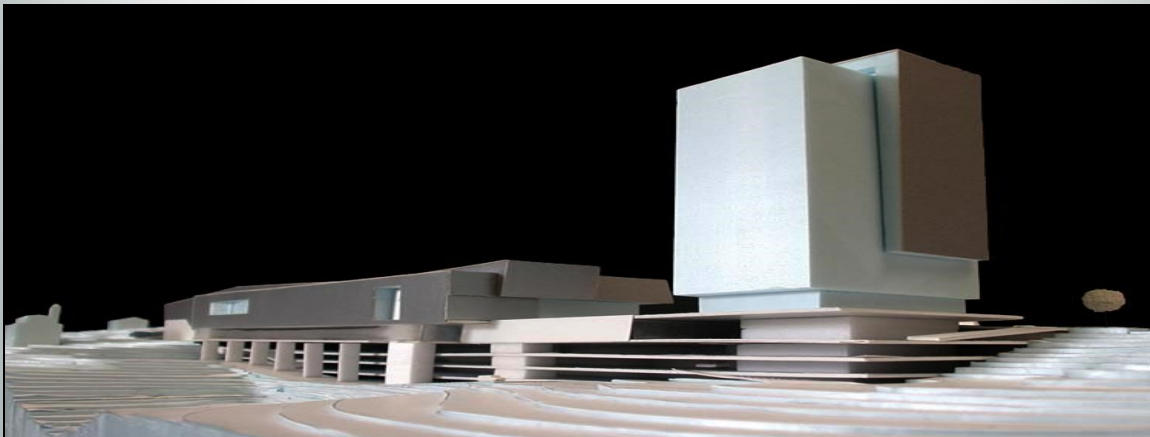
Trattasi di una Unità Immobiliare Commerciale destinata uso Discount Alimentare collocata all'interno di un Centro Commerciale in una primaria città Istriana.

Locato ad una catena di Distribuzione Alimentare leader con un Contratto rinnovato per altri otto anni, genera in relazione alla richiesta della Proprietà uno yield del 8-9%.

### COMMERCIAL BUILDING TO YIELD

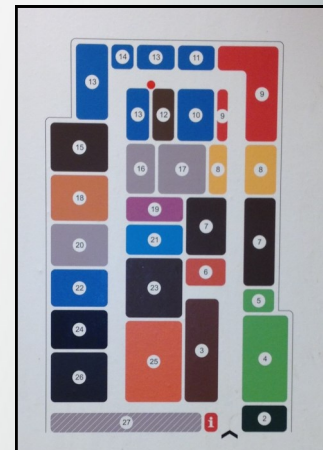
This is a Commercial Unit for a Food Discount placed inside of a Shopping Center in a major city of Istria.

Leased to a leader Food Distribution Chain, with a long lease Contract renewed for another eight years, developed in relation to the owner's request a yield of 8-9%.



### IMMOBILE-BUILDING

4.935,40 sqm net [5.122,97 sqm brut] **Commercial Area**  
 3.803,53 sqm net [3.958,27 sqm brut] **Stock-Fridge Area**  
 420,39 sqm **Charge Area**  
 PI k,l,m,n,o,p,q,r,s,t,u, on exclusive **Parking**



**Non esitate a contattarci per informazioni dettagliate, negoziazioni riservate.**

**Don't hesitate to contact us for further information, negotiations are reserved.**

