



Dear All,

We are pleased to announce our presence, not new, in Real Estate Market, not only in Switzerland, but with the direct collaboration of Professionals Partners, who oversee the nations where they operate with permanent establishments.

We are sure to provide professional information and services related to Real Estate opportunities in Europe and not only.

Team
Trust4Trust



Alphagate[®]

Promotion Real Estate Development

presents FILIPESCU28 BUCHAREST
An opportunity already on Yield!

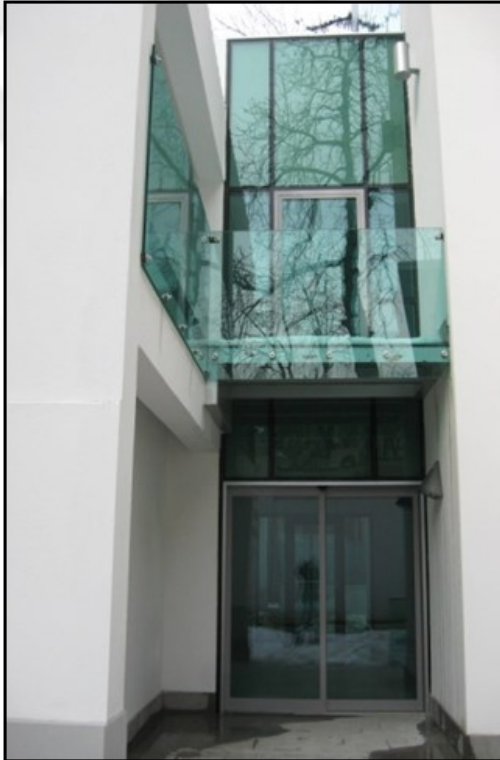


LUGANO
VERONA
CHISINAU
TIMISOARA
BUCHAREST
BEOGRAD

adessopartners[®]

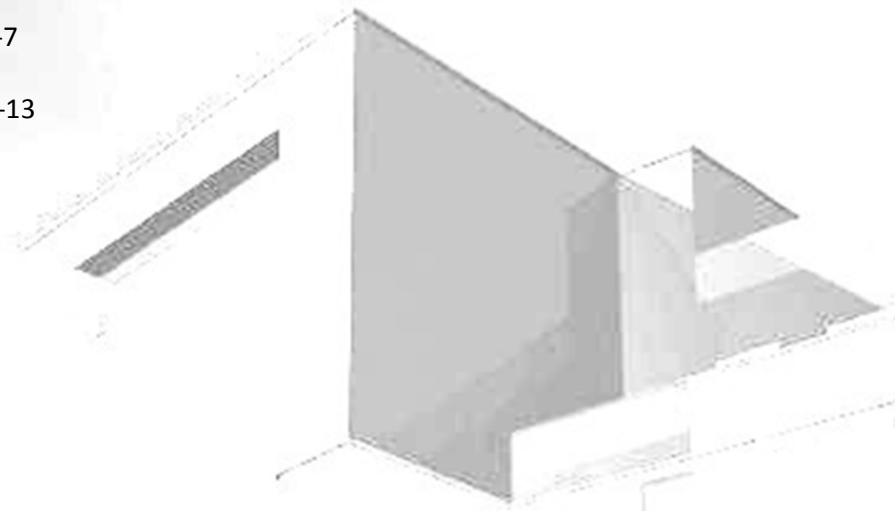
INTEGRATED SERVICES IN REAL ESTATE

www.adessopartners.com



INDEX

- COVER pg. 1
- PHOTO pg.2
- INDEX pg. 3
- MISSION pg. 4
- DESCRIPTION LOCALIZATION pg. 5-6-7
- PLAN pg. 8-9-10
- PHOTO INTERIO EXTERIOR pg. 11-12-13
- NOTE CONTACT pg. 14



Our mission

Our company AdessoPartners[®], operate in the Balkans managing Private Assets, through our Network we provide also Real Estate Services .

With ALPHAGATE Promotional Real Estate.

Our policy always has been able to find events, that generate secure income and capitalization, and unique events.

For years we have concentrated in the Capital City, in his km zero, and that of all the important town in the Balkans, where we operate.

Promotion-Advisory-Estimation are always focused on well-defined meanings in Real Estate.

An exact connection and relation to the historical economic-moments and their evolution.

*Located in the heart of the Capital, a few meters from “Universitate Square”, in the very center of the business.
High quality, technology, all connections, flexible in the apartments’ layout, access and underground private parking.*

The new construction is located in Str. Nicolae Filipescu no.28, Bucuresti – sector 2.

Height regime 3S + P + E1 + E2 + E3 + E4 retrace + E5 retrace

Total built 6 122.40 sqm

Ground surface 993.65 sqm

Built surface area 636.00 sqm (POT = 64%)

Built area above ground 3 143.00 sqm (CUT = 3 .16)

No. Standing up people in the building: 245.

No. vehicles in underground parking: 62

Category C - normal

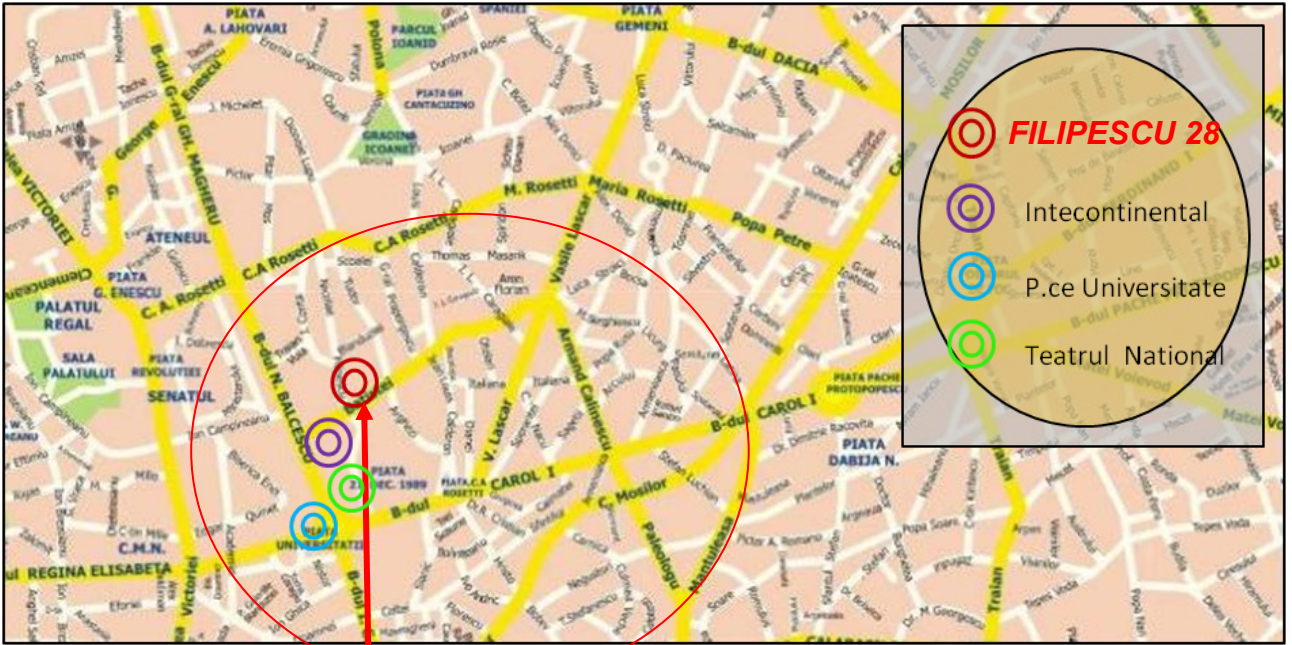
Class II fire resistance

Class III construction

Quality 3

Seismic area C





BUCHAREST
Downtown

FILIPESCU 28

blv. nicolae balcescu

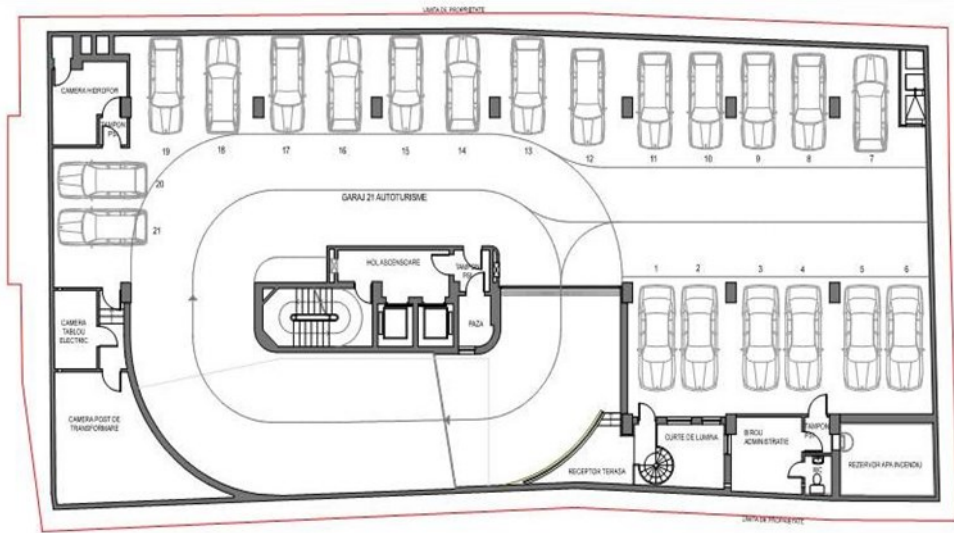


universitate

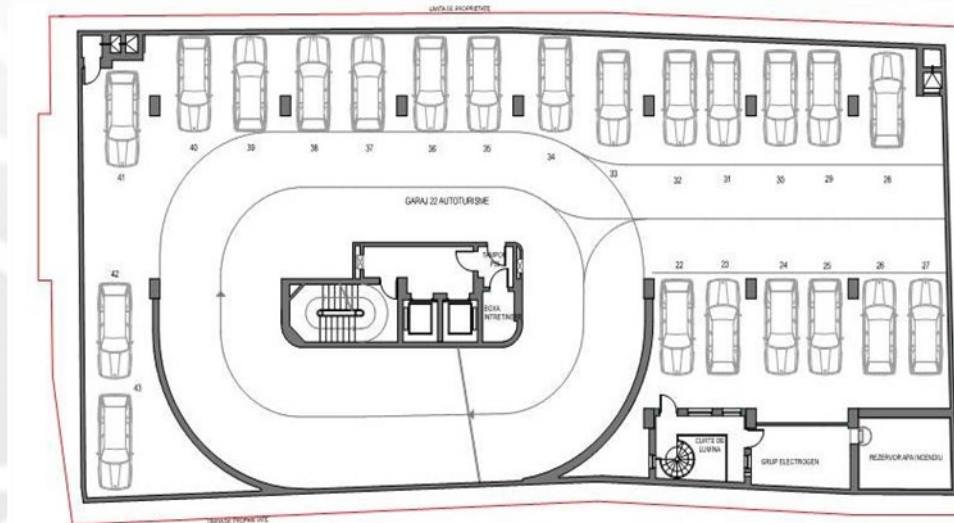
intercontinental hotel

teatrul national

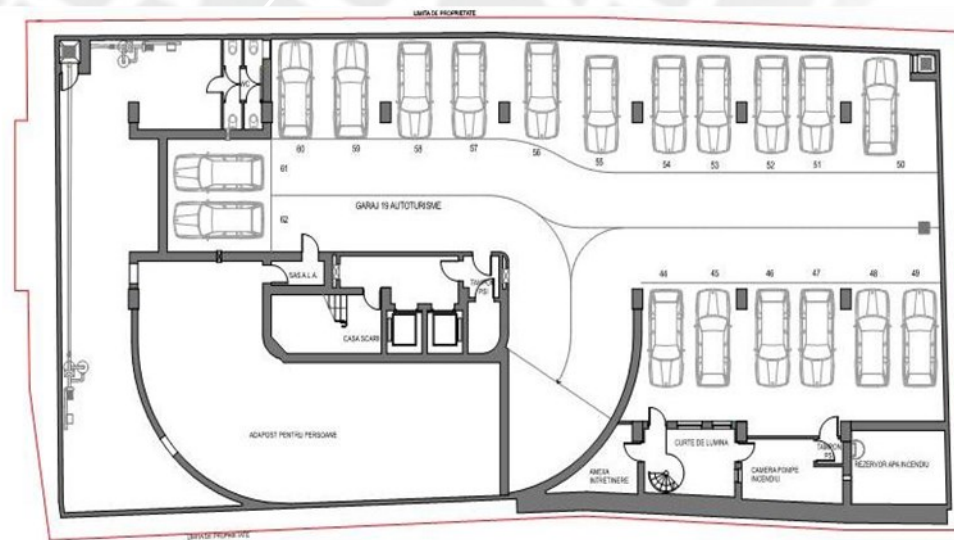
**UNDERGROUND
PRIVATE
PARKING**
~ 100 no



P.-1



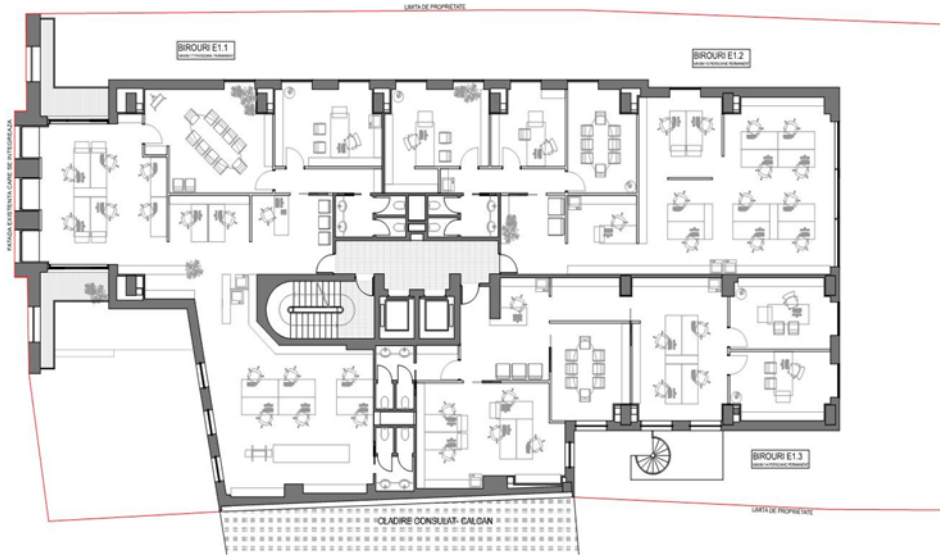
P.-2



P.-3



FLOOR



FIRST FLOOR



SECOND FLOOR

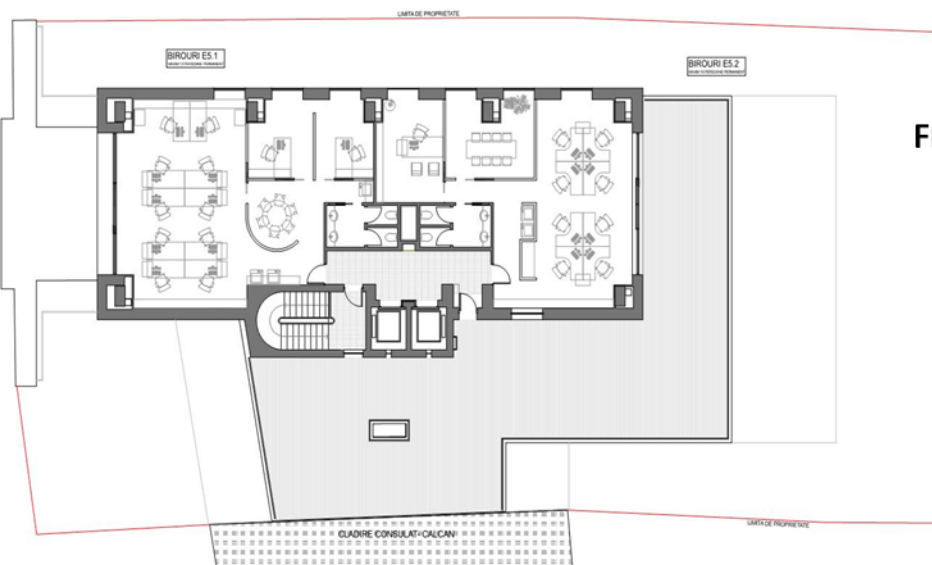
ALL OPEN SPACE NOW



THIRD FLOOR



FOURTH FLOOR

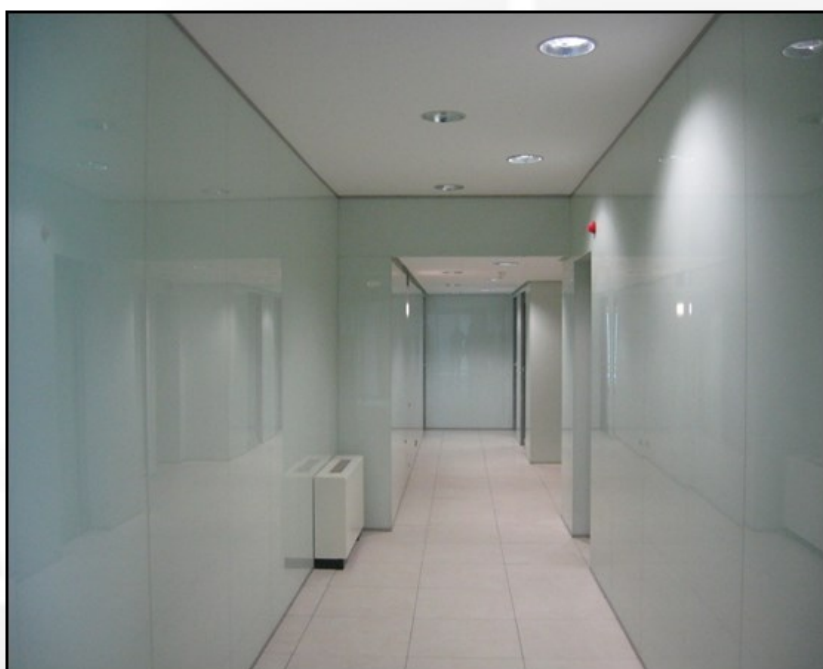


FIFTH FLOOR

ALL OPEN SPACE NOW



**PRIVATE UNDERGROUND
PARKING**



HALL

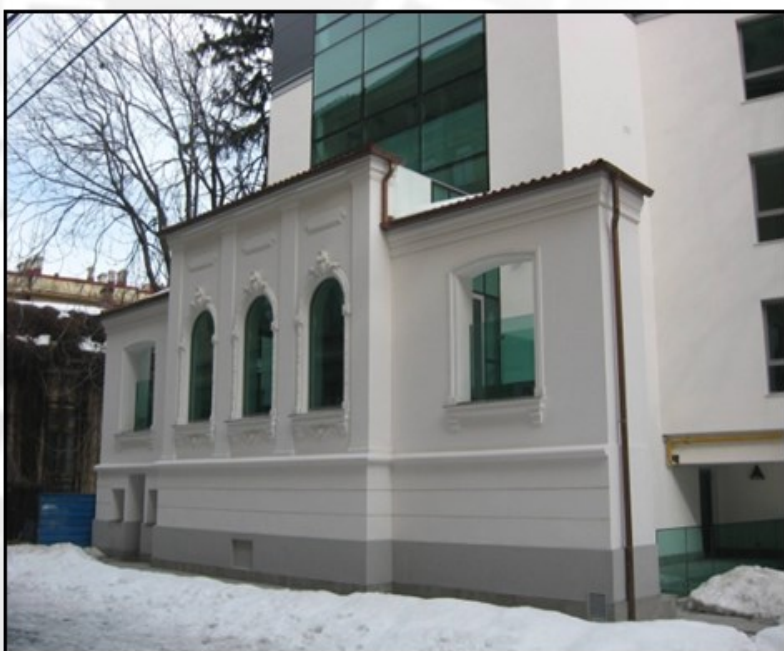


LIFTS



FLEXIBLE ALL OPEN SPACE





EXTERNAL

HEADQUARTER Swiss
Via Pioda, 6
Tel. +41 (0)91 220 73 73
Fax +41 (0)91 220 47 11
6900 LUGANO - Swiss CH

HEADQUARTER Romania
Str. A. Pacha, 10 sc.A int.7/8
Tel. +40 0256 499 564
Fax. +40 0256 499 563
TIMISOARA, Romania

BRANCH Unit Romania
Bd. Regina Elisabeta 7-9, Sector 3
BUCHAREST Romania

HEADQUARTER Moldova
Str. Lev Tolstoi 27, bir 32
CHISINAU Moldova

HEADQUARTER Italy
Via F. Morosini, 7
VERONA, Italy

HEADQUARTER Serbia
Deligradska br. 9/40
11000 Beograd – Srbija