



Dear All,

We are pleased to announce our presence, not new, in Real Estate Market, not only in Switzerland, but with the direct collaboration of Professionals Partners, who oversee the nations where they operate with permanent establishments.

We are sure to provide professional information and services related to Real Estate opportunities in Europe and not only.

Team

Trust4Trust



Presents a distressed opportunity

REGINA ELISABETA 33
Bucharest - ROMANIA



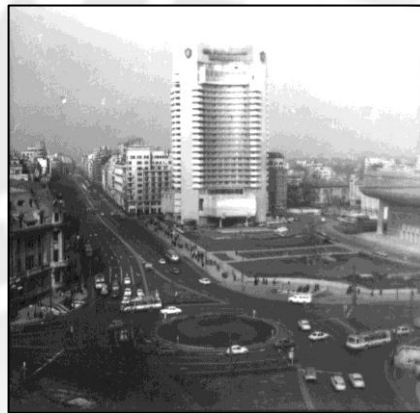
LUGANO
VERONA
CHISINAU
TIMISOARA
BUCHAREST
BEOGRAD

www.adessopartners.com

adessopartners[®]
INTEGRATED SERVICES IN REAL ESTATE

INDEX

- 1 - Cover
- 3 - Index
- 4 - Maps
- 5 - Description
- 6 - Maps
- 7 - Plan
- 8 - Project
- 9 - Project
- 10 - Photo
- 11- Contacts



ROMANIA

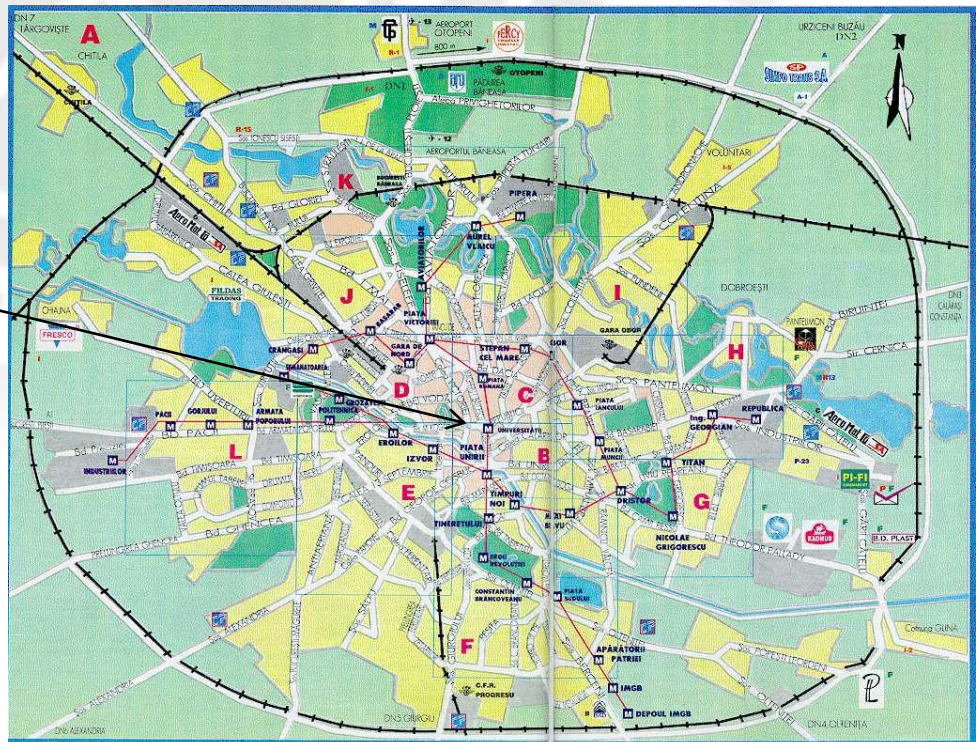


BUCHAREST







Capital City
2,3 mln urbans inhab.
3,4 mln metrop. inhab.

63% PIL of the State

Investment
in the heart
of Bucarest
Downtown

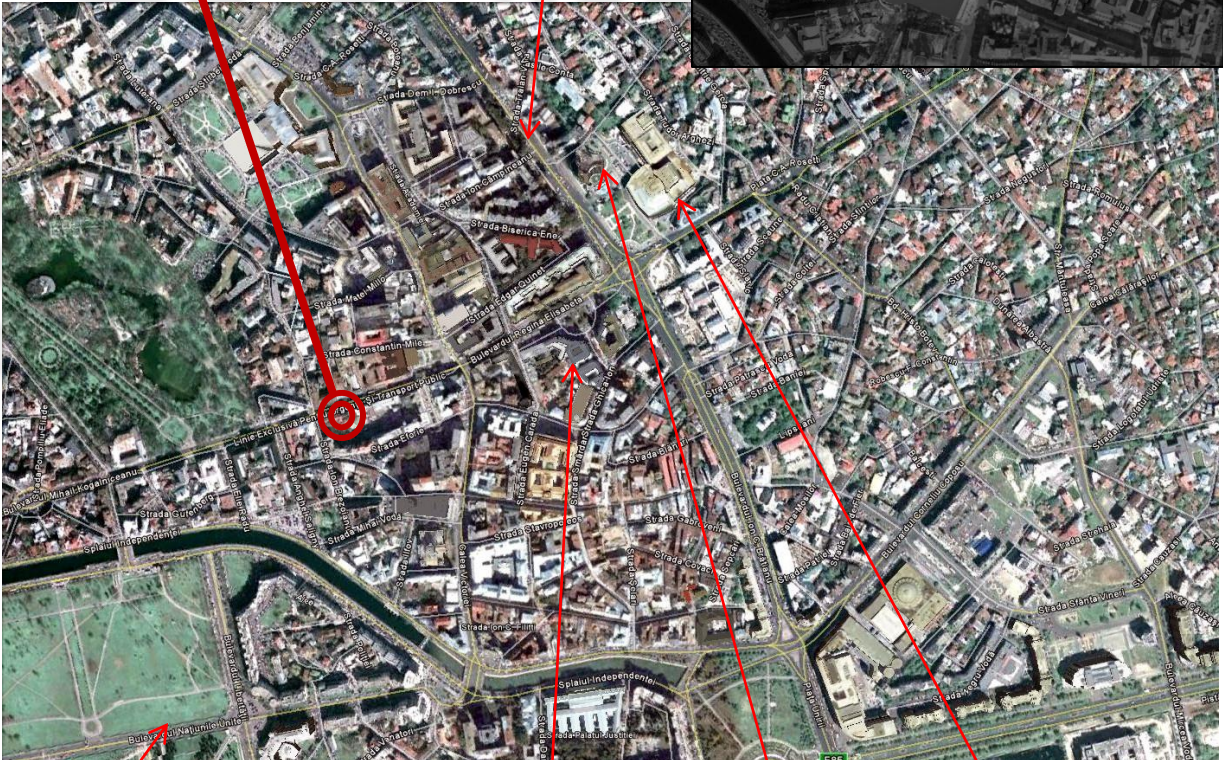
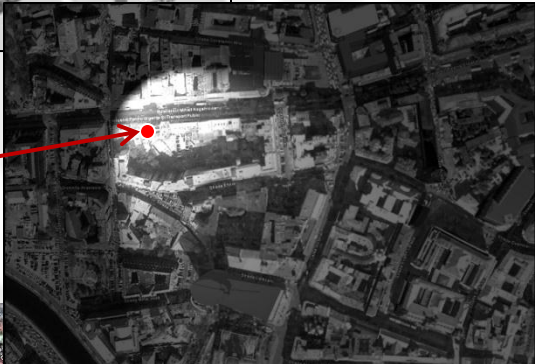




-  **REGINA ELISABETA 33**
-  Parlament
-  P.ce Universitate
-  Teatrul National
-  B.C.R.
-  Lipscai

REGINA ELISABETA 33

blv. nicolae balcescu

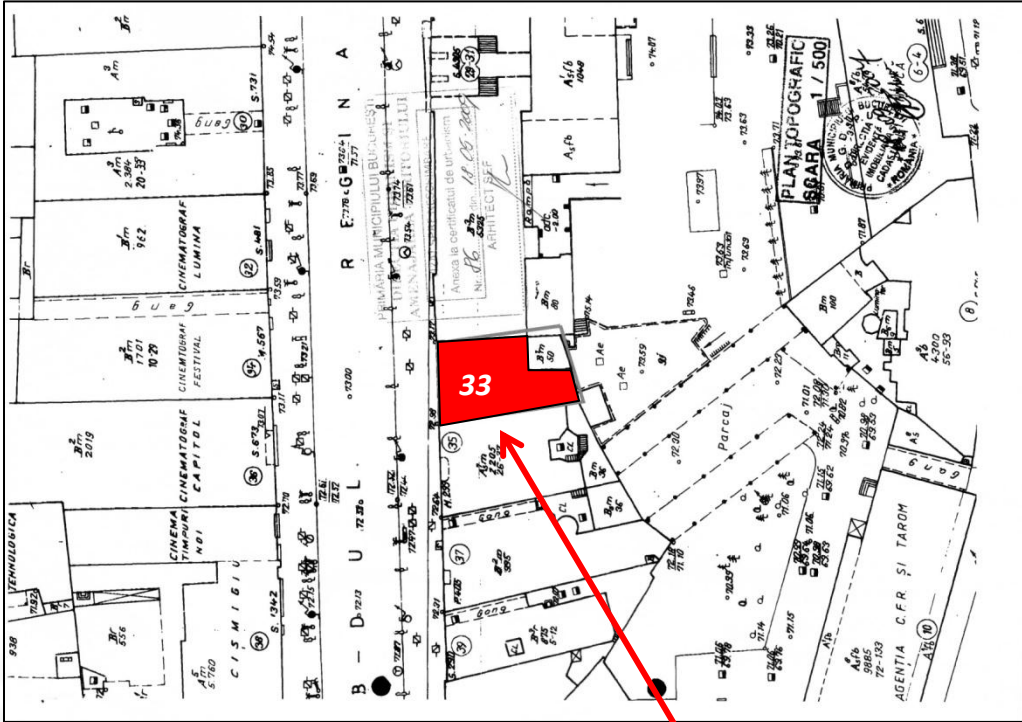


parlament

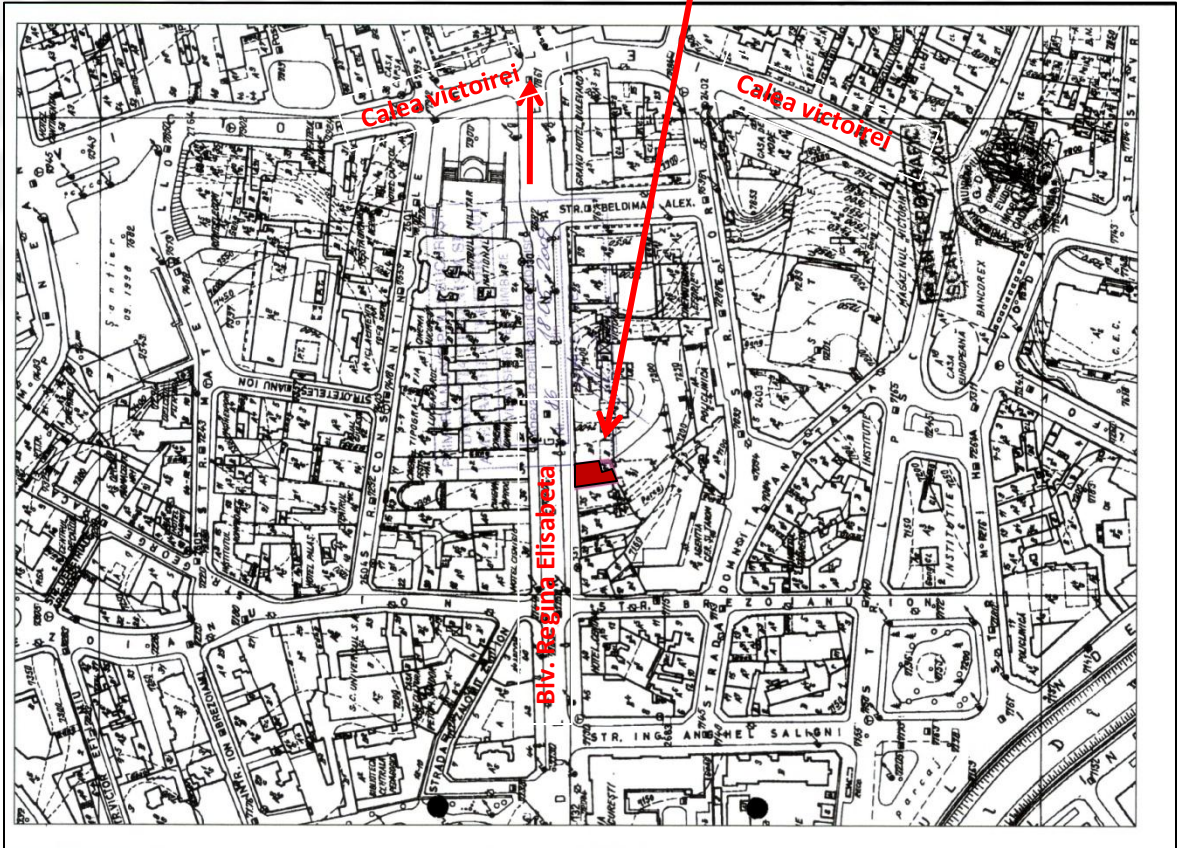
B.C.R.

intercontinental hotel

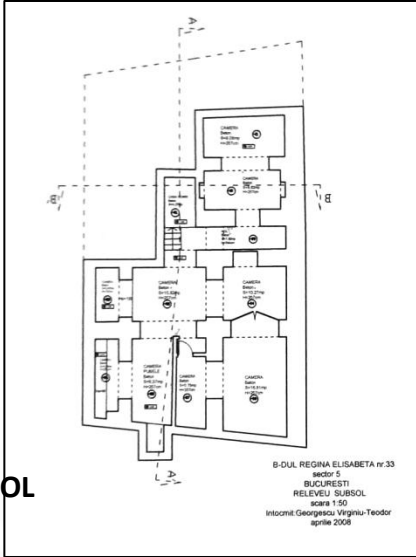
teatrul national



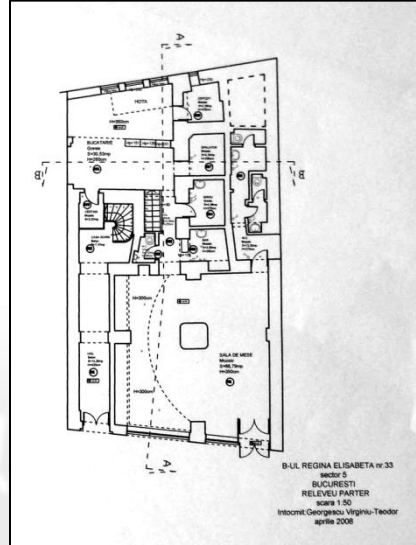
Regina Elisabeta 33



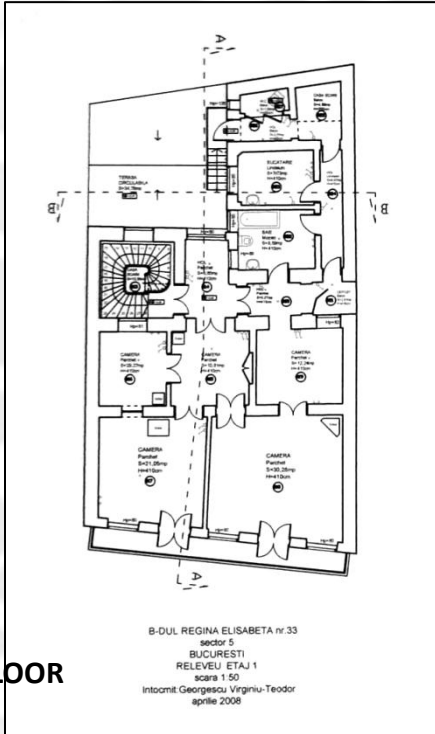
PLAN- LEVEL



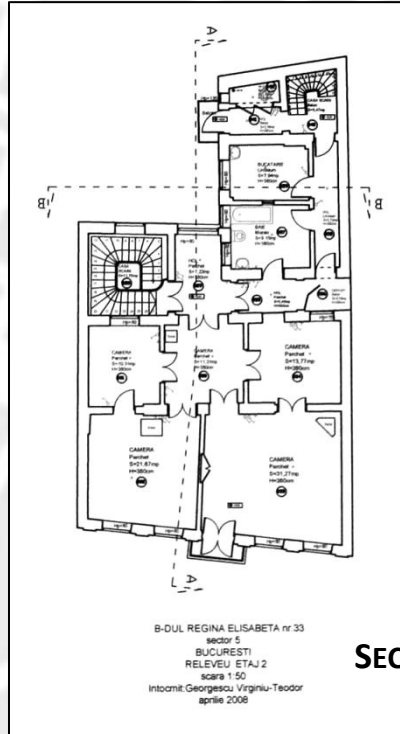
SUBSOL



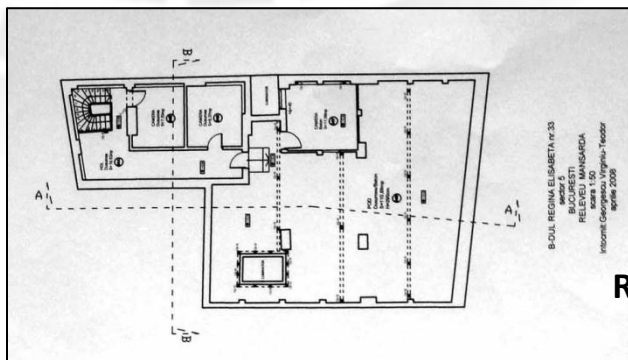
FLOOR



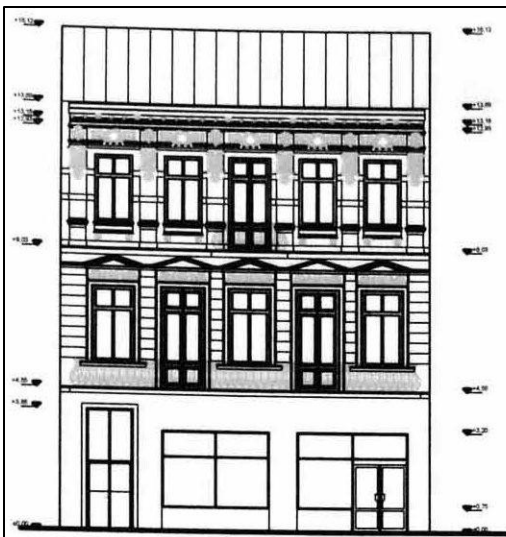
FIRST FLOOR



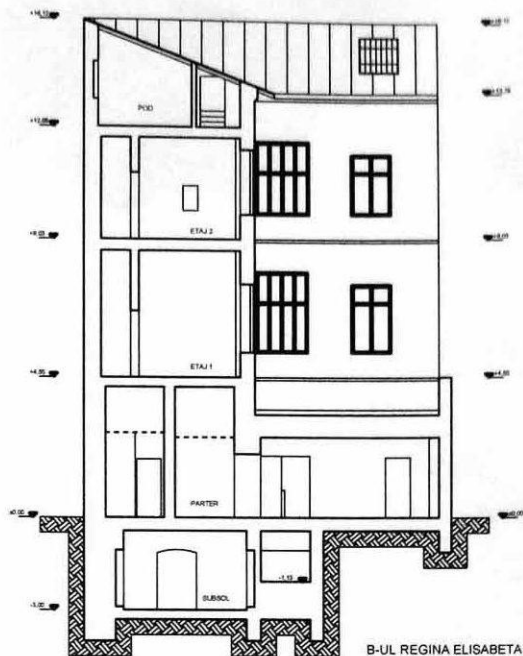
SECOND FLOOR



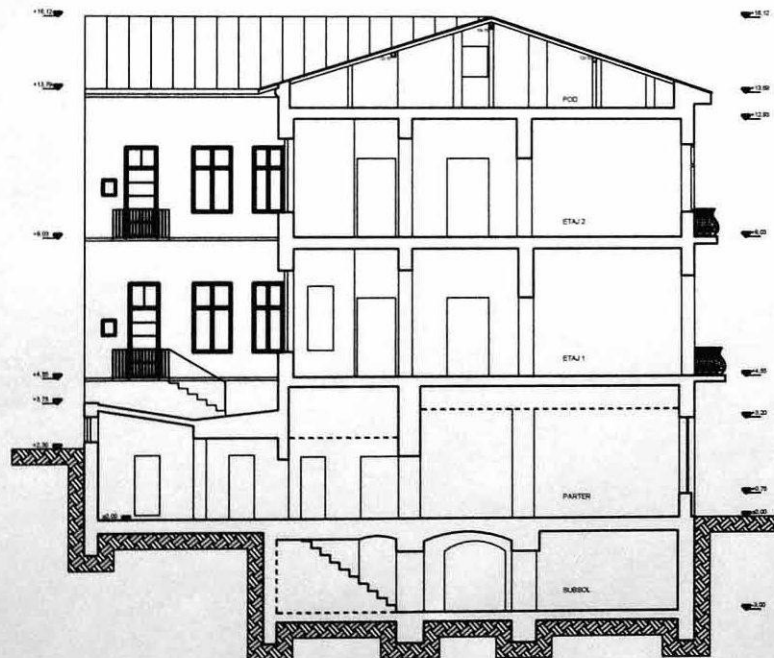
RETRAGE



B-DUL REGINA ELISABETA nr.33
sector 5
BUCURESTI
RELEVU FATADA PRINCIPALA
scara 1:50
Intocmit: Georgescu Virginiu-Teodor
aprilie 2008

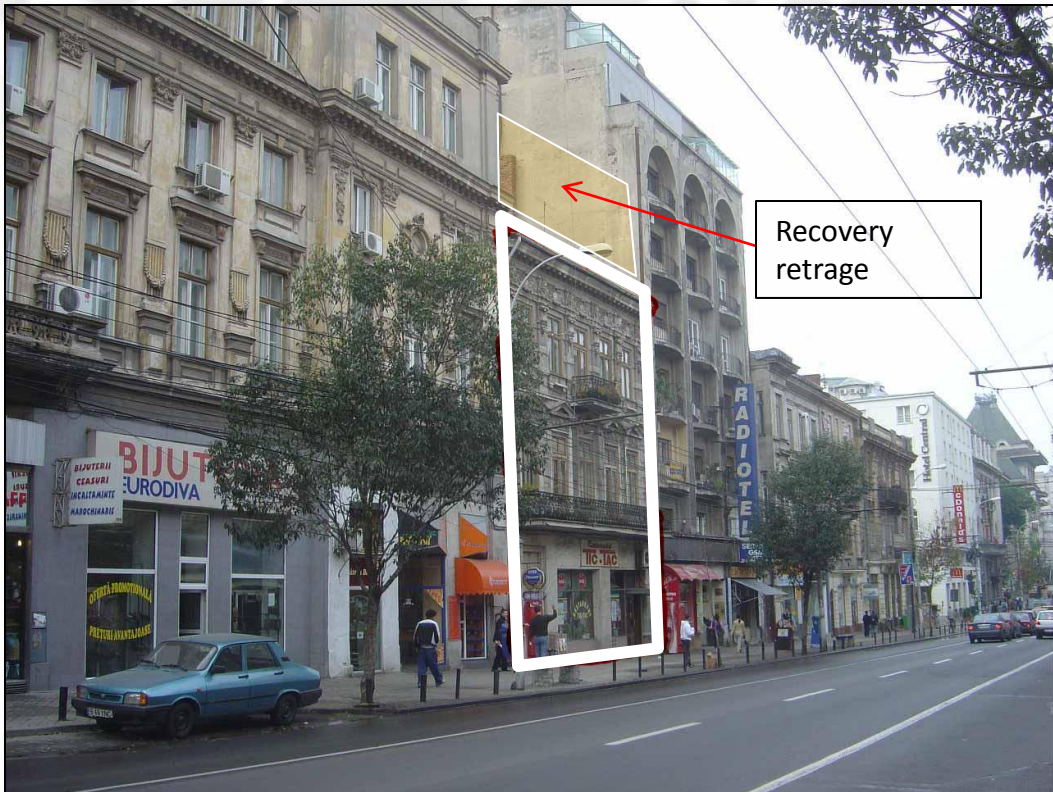


B-UL REGINA ELISABETA nr.33
sector 5
BUCURESTI
SECTIUNE B - B'
scara 1:50
Intocmit: Georgescu Virginiu-Teodor
aprilie 2008



B-UL REGINA ELISABETA nr.33
sector 5
BUCURESTI
SECTIUNE A - A'
scara 1:50
Intocmit: Georgescu Virginiu-Teodor
aprilie 2008

SECTIONS



HEADQUARTER Swiss
Via Pioda, 6
Tel. +41 (0)91 220 47 10
Fax +41 (0)91 220 47 11
6900 LUGANO - Swiss CH

HEADQUARTER Romania
Str. A. Pacha, 10 sc.A int.7/8
Tel. +40 0256 499 564
Fax. +40 0256 499 563
TIMISOARA, Romania

BRANCH Unit Romania
Bd. Regina Elisabeta 7-9, Sector 3
BUCHAREST Romania

HEADQUARTER Moldova
Str. Lev Tolstoi 27, bir 32
CHISINAU Moldova

HEADQUARTER Italy
Via F. Morosini, 7
VERONA, Italy

HEADQUARTER Serbia
Deligradska br. 9/40
11000 Beograd – Srbija

