

INDUSTRIAL
LOGISTIC

COMMERCIAL
OFFICE

RENEWABLE
ENERGY

NEWSLETTER 05.12.2013

WIND POWER PLANT - 12,5 MW



- General information regarding the project;
- Technical characteristics for the wind turbine - FUHRLANDER FL 2500 – 100;
- Site proposal.

GENERAL INFORMATIONS

TECHNICAL SPECIFICATIONS:

- Annual wind speed at a height of 100 m is 6,19 m/s according to wind measurement campaign;
- The proposed solution is to erect 5 wind turbines, each with a power of 2,5 MW , resulting in an total installed power of 12,5 MW;
- The wind turbines will be connected with medium voltage cables located at the side of the access roads, and transformer stations 0,69/ 20 KV;
- The 5 wind turbine s “TOP SIDE” will connect to the national distribution system through an transformer station of 20/110 KV located near the wind park;
- The wind farm will be dispatched and will act as a central connected to the national distribution system;
- The access to the wind farm will be from the national road DN 57 Oravita –Moldova Noua , at about 0,5 km from the exit from Oravita to Moldova Noua.

TECHNICAL CHARACTERISTICS OF THE WIND TURBINE - FUHRLANDER FL 2500-100

Diameter: 100 m

Number of blades: 3

Speed: 10,4...18,1 / 9,4...17,1 min-1

Generator Design: Double fed asynchronous with slip-ring rotors

Generator Speed: 750-1.310 min-1 (50 Hz) / 900-1.570 min-1 (60 Hz)

Generator Voltage: 690 V (50/60 Hz)

For more informations:

SWISS FLORIDA LONDON SERBIA ROMANIA REP. MOLDOVA

E-mail: newsletter@adessopartners.com – Website: www.adessopartners.com

If you want to unsubscribe this newsletter, please reply to this email with the word "Unsubscribe" in the subject

Converter system: static inverter with intermediate DC circuit

Rated output: 2.500 kW at 12,0 m/s

Start wind: 3,5...4,0 m/s

Stop wind: 25 m/s

Survival wind: 59,5 m/s

Hub height: 100 m

Tower Design: conical tubular tower,

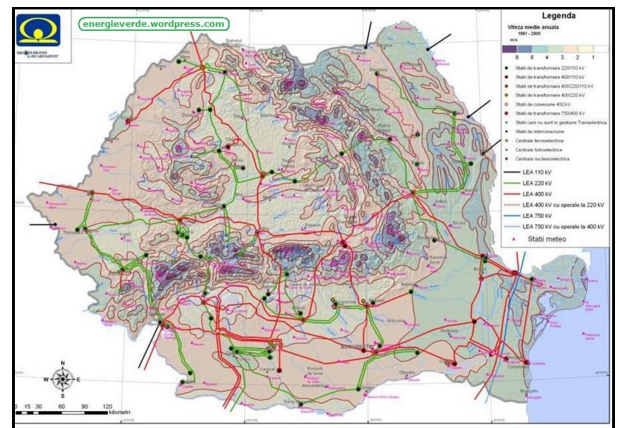
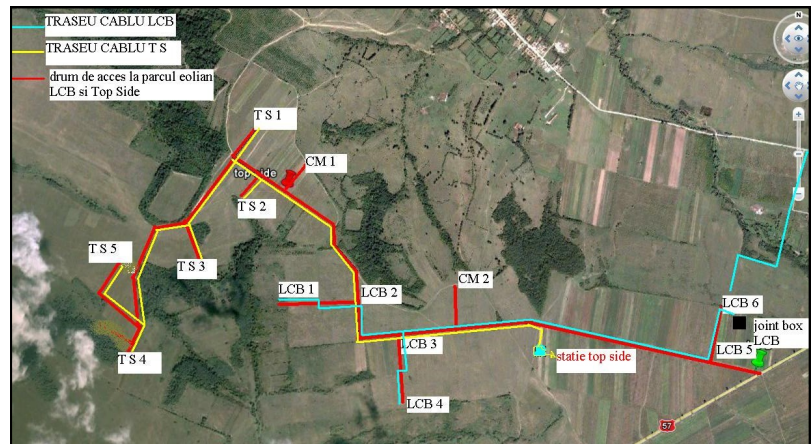
Speed regulation: electronic pitch system

Yawing control: 4 geared engines

Main brake: 3x independent pitch system

2nd Brake system: hydraulic disc brake

Monitoring: Conventional network/Radio



SYNTHETICAL SHEET REVENUES

Power 12,5 MW

0,6 CV * 40 euro	Euro 24
Energy pay 132 ron = 30 euro	Euro 30
Total for MW/Y	Euro 54

Year/prod/energy ~24.000 MW * 54 euro **1,296,000 Euro/y**

CONFIDENTIAL NEGOTIATIONS

By our office, complete industrial and financial plan, and all documents authorized from Authority in original.

Don't hesitate to contact us for further information

Your AdessoPartners Team



For more informations:

SWISS FLORIDA LONDON SERBIA ROMANIA REP. MOLDOVA

E-mail: newsletter@adessopartners.com – Website: www.adessopartners.com

If you want to unsubscribe this newsletter, please reply to this email with the word "Unsubscribe" in the subject